

# Campaspe Family Violence Action Group

## Strategic Priorities 2021



### Strategic Priority One

#### Facilitate a Campaspe that:

- promotes organisations and communities to be gender equitable in their practices,
- promotes equal and respectful relationships,
- understands the gendered dynamics of family violence,
- promotes and values women's equal participation in public and private life.

#### This will be achieved by actions to:

1

Align CFVAG activities with the Campaspe catchment Prevention plan & state based peak bodies including Gender Equality Act 2020 (Vic), 16 Days of Activism, GenVic, OurWatch, VicHealth, Respect Victoria, Respectful Relationships etc.

2

Promote an understanding of gender equity through capacity building as a means to actively challenge attitudes & behaviours that contribute to gender inequality.

3

Support at least one key event each year which connects with the local community & promotes the work & resources of CFVAG & the importance of Women's leadership (Family Violence being everyone's business).

“ Gender equality is when people of all genders have equal rights, responsibilities and opportunities. Gender equality ensures that all people are treated with dignity, respect and fairness. It is essential to prevent violence against women and girls and for economic prosperity. Societies that value women and men as equal are safer and healthier. Gender equality is a human right. Everyone benefits from gender equality. VicHealth ”

“ Gender equality, equality between men and women... does not mean that women and men have to become the same, but that their rights, responsibilities and opportunities will not depend on whether they were born male or female. Gender equity means fairness of treatment for men and women according to their respective needs. This may include equal treatment or treatment that is different but which is considered equivalent in terms of rights, benefits, obligations, and opportunities. ”  
United Nations Educational, Scientific and Cultural Organization

#### Campaspe catchment Prevention & Health Promotion Plan - focus areas for 2020-2022

1

Gender Equity: Prevention of Family Violence

2

Supporting workplaces to achieve the Gender Equality Act using the Our WATch toolkit

3

Promoting and delivering Equality and Respect training to role models and people of influence

4

Supporting gender equity in the early years sector

5

Development of Campaspe specific gender equity and healthier masculinity clips

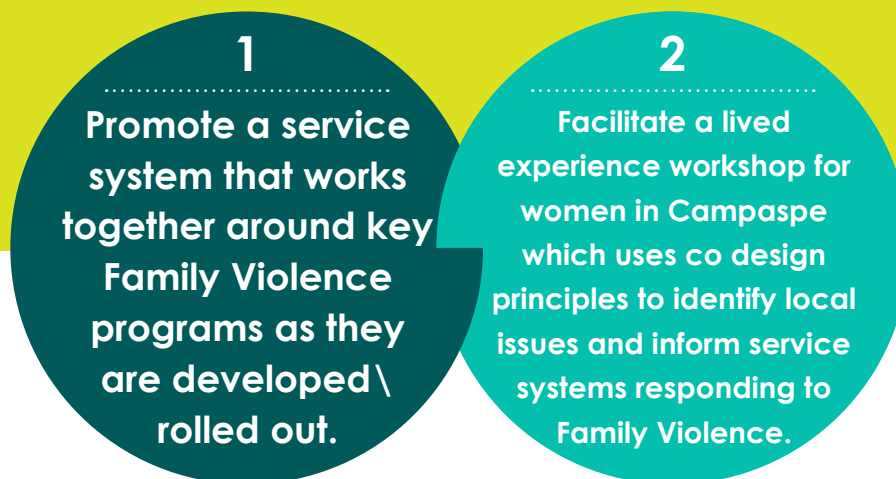
# Campaspe Family Violence Action Group

## Strategic Priorities 2021

### Strategic Priority Two

Facilitate a service system with the understanding and capacity to respond appropriately to all who experience family violence in Campaspe (no wrong door)

This will be achieved by actions to:



#### This will be achieved by:

Working together to align to the shared language, a common understanding of FV, frameworks and tools of the MARAM; agencies will commit to supporting each in this process.

#### Activities to include:

- MARAM Collaborative Practice training together.
- A follow up workshop - what this means for collaboration in Campaspe?

#### We will measure/evaluate the effective of this by:

1. Asking our staff about their confidence and skills in responding to family violence
2. Asking women about their experience of the service systems using a lived experience service system mapping process.

#### Timeframes: 3 Years

- 1st year** – MARAM and capacity building focus  
**2nd year** – System works together to identify integration activities  
**3rd year** - Lived experience mapping

#### For further information contact the Chair of the Campaspe Family Violence Action Group:

Campaspe Family Violence Action Group exists to drive greater integration and coordination of local services – for all those experiencing family violence in Campaspe; and to prevent family violence before it occurs through evidence-based action on gender inequality in all settings across the community.

**Yvette Jaczina**

*Chair, Executive Manager  
Program & Services*

*Centre for Non Violence*

phone: **(03) 5430 3000**

email: **YvetteJ@cnv.org.au**

**Genine Hook**

*Deputy Chair*

*Women's Health Loddon Mallee*

phone: **03 5443 0233**

email: **ghook@whlm.org.au**



[www.campaspefamilyviolence.org.au](http://www.campaspefamilyviolence.org.au)